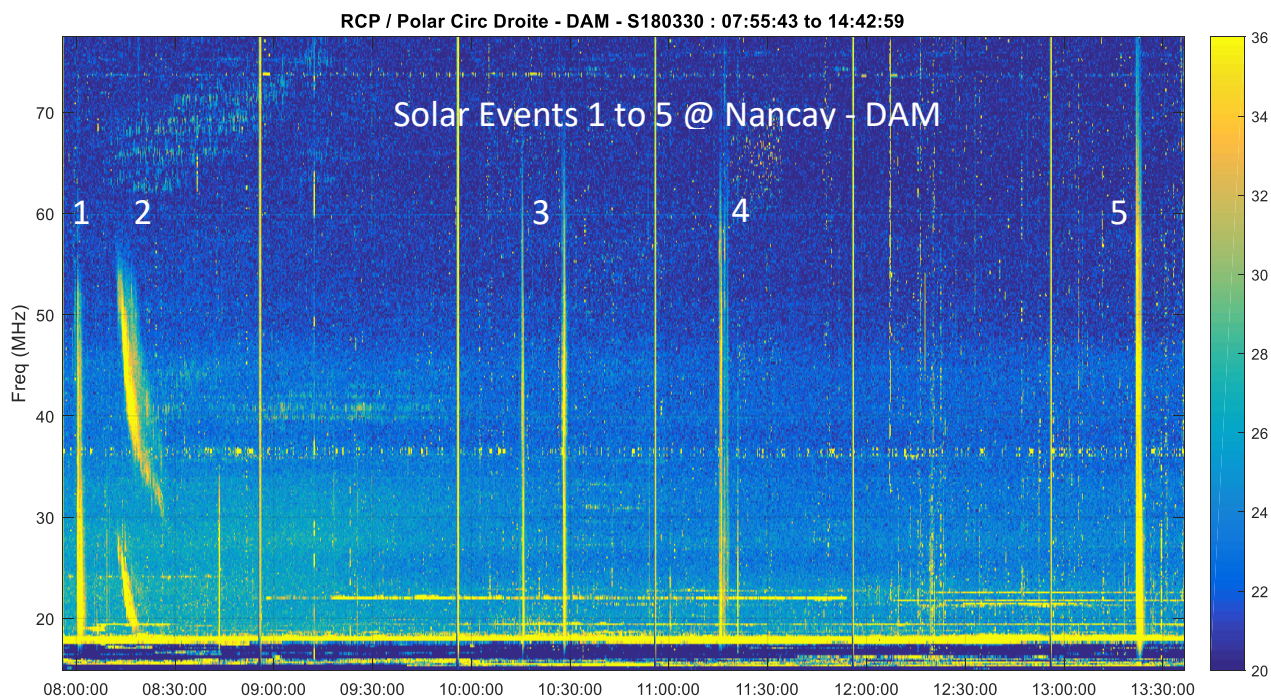


Solar Radio Events @ 30 Mars 2018 (Sun 180330)

References :

- DAM – NANCAY : https://realtime.obs-nancay.fr/dam/data_dam_affiche/data_dam_affiche.php?planete=soleil&couleur=Couleur&mode=ql&mois=3&an=2018
- Victor Herrero – Blog : <http://herrero-radio-astronomy.blogspot.com/2018/03/sun-earth-jupiter-20180330.html>
- NOAA / SWPC observatory <ftp://ftp.swpc.noaa.gov/pub/indices/events/20180330events.txt>
- OBPSM observatory - LESIA : <http://lesia.obspm.fr/De-la-radioastronomie-a-la.html?artpage=4-5>



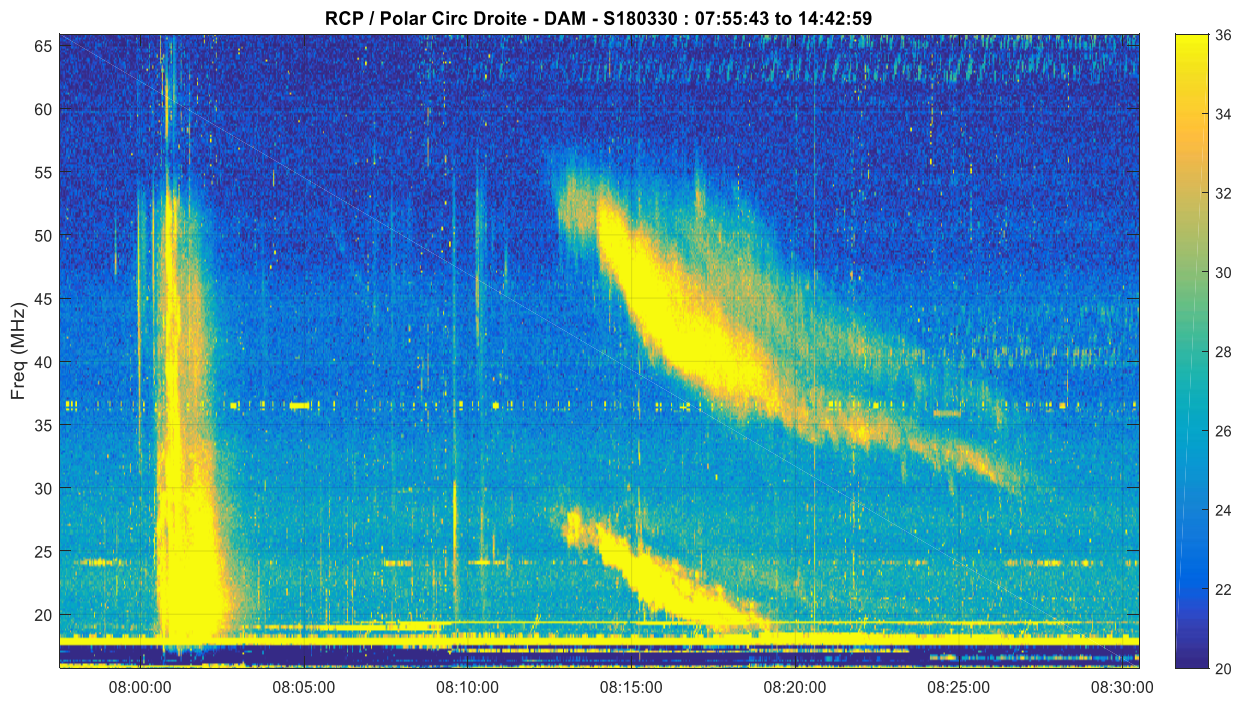
Sun 180330 , 20 radio events 25-410 MHz

Event	Start	Max	End	Obs	Q	Type	MHz	Type
4330 +	0148	////	0206	LEA	C	RSP	025-173	III/2
4340 +	0254	////	0300	LEA	C	RSP	025-180	III/3
4350 +	0412	////	0417	LEA	C	RSP	025-180	III/2
4360	0445	////	0530	LEA	C	RSP	025-180	III/3
4360	0514	////	0532	SVI	C	RSP	025-180	VI/2
4370 +	0722	////	0727	LEA	C	RSP	025-084	III/1
4380 +	0745	////	0811	LEA	C	RSP	025-180	VI/3
1	4380	0800	0802	SVI	C	RSP	025-180	V/2
	4380	0800	0800	SVI	G	RBR	245	360
	4380	0800	0800	SVI	G	RBR	410	170
2	4380 +	0804	0828	SVI	C	RSP	025-050	II/2
	4390	1015	1016	SVI	C	RSP	025-180	III/1
3	4400	1028	1029	SVI	C	RSP	025-147	III/2
4	4410 +	1115	1118	SVI	C	RSP	025-111	III/1
5	4430 +	1321	1324	SVI	C	RSP	025-180	III/2
	4430 +	1322	1322	SVI	G	RBR	245	210
	4450 +	1526	1526	SVI	C	RSP	025-041	III/1
	4460 +	1608	1609	SAG	C	RSP	025-157	III/1
	4480 +	1754	1801	SAG	C	RSP	025-180	III/2
	4490	2118	2130	SAG	C	RSP	025-068	VI/2

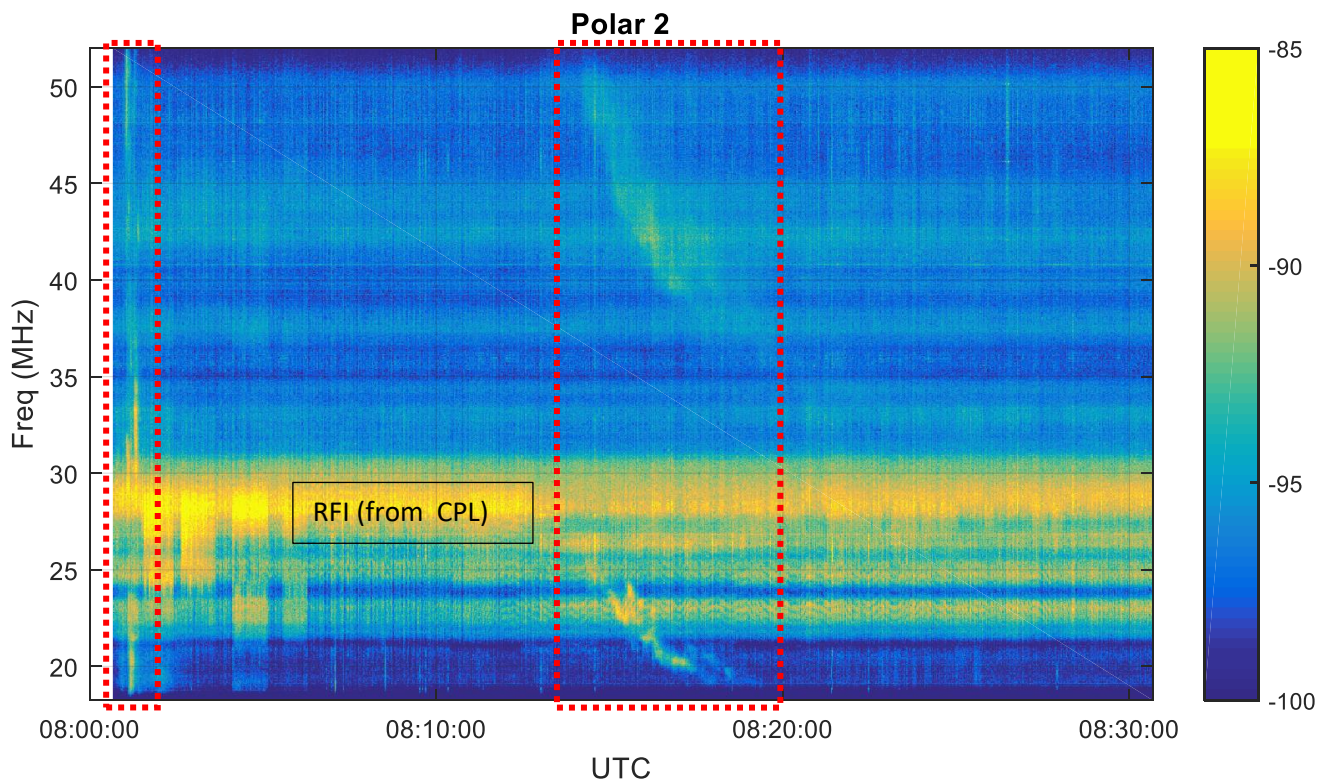
USAF observatories monthly number of radio events

Events 1 – type V & 2 – type II (with harmonic) :

✓ Nancay

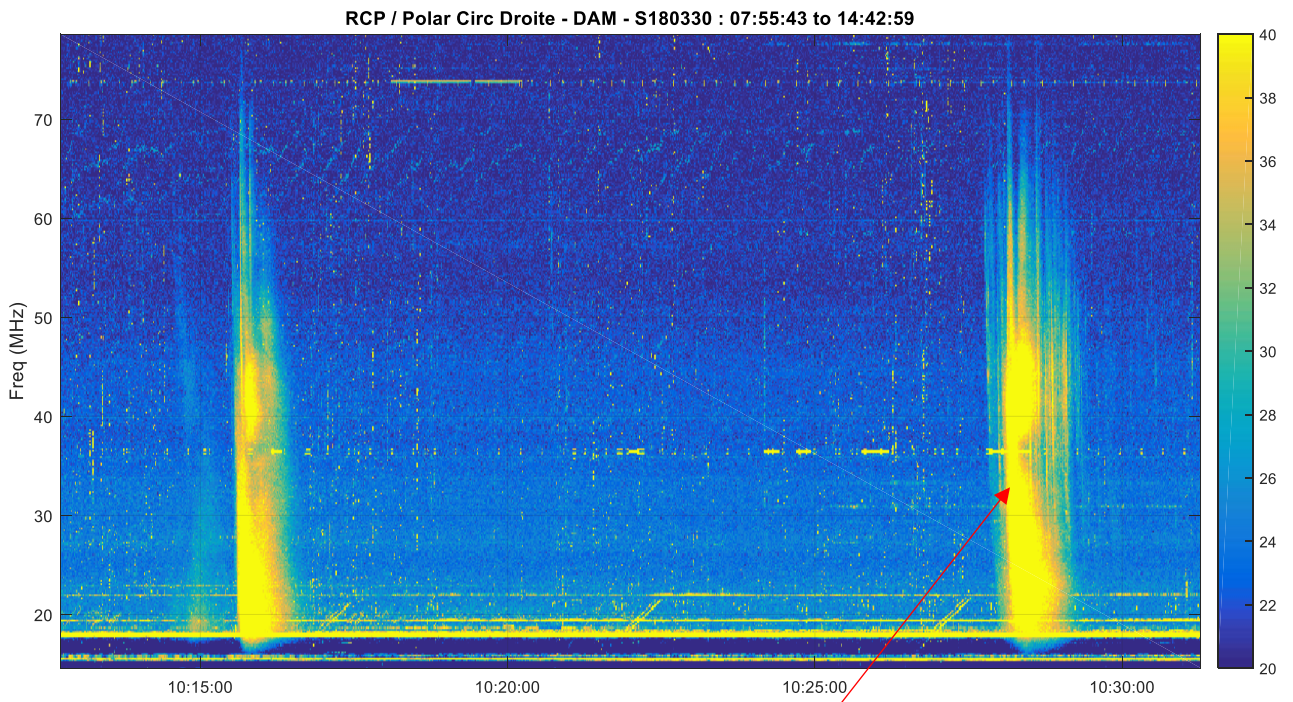


✓ LWA : Orsay

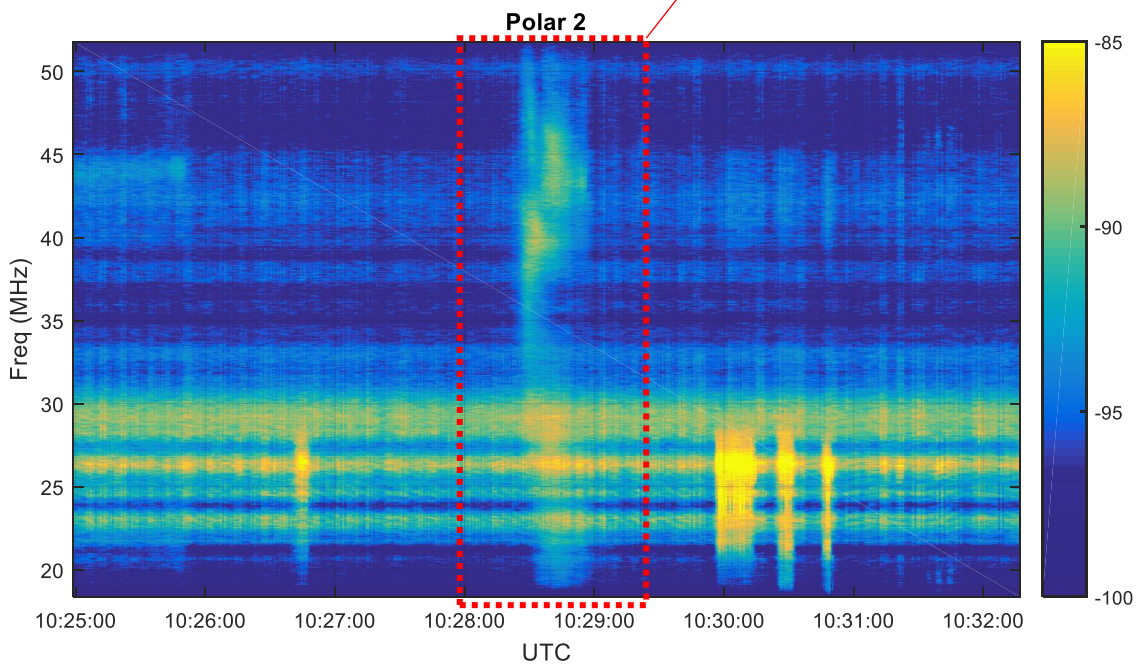


Events 3 – type III :

✓ Nancay

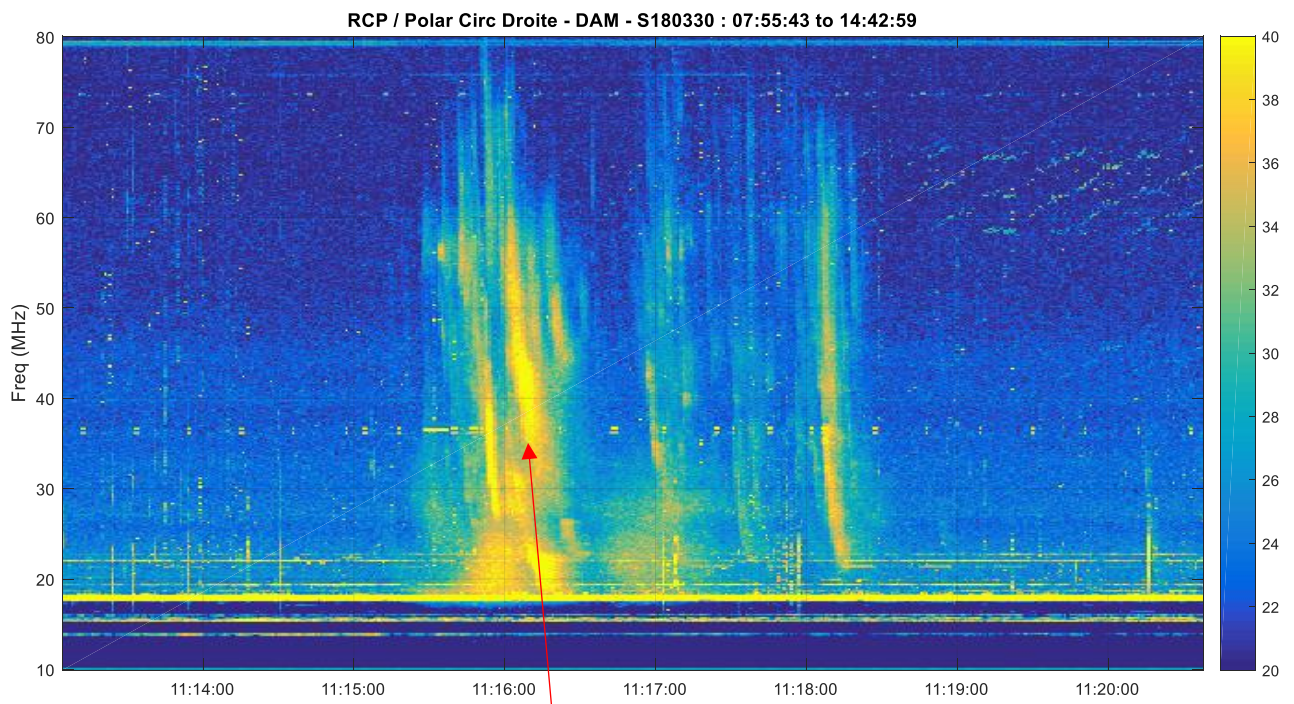


✓ LWA : Orsay

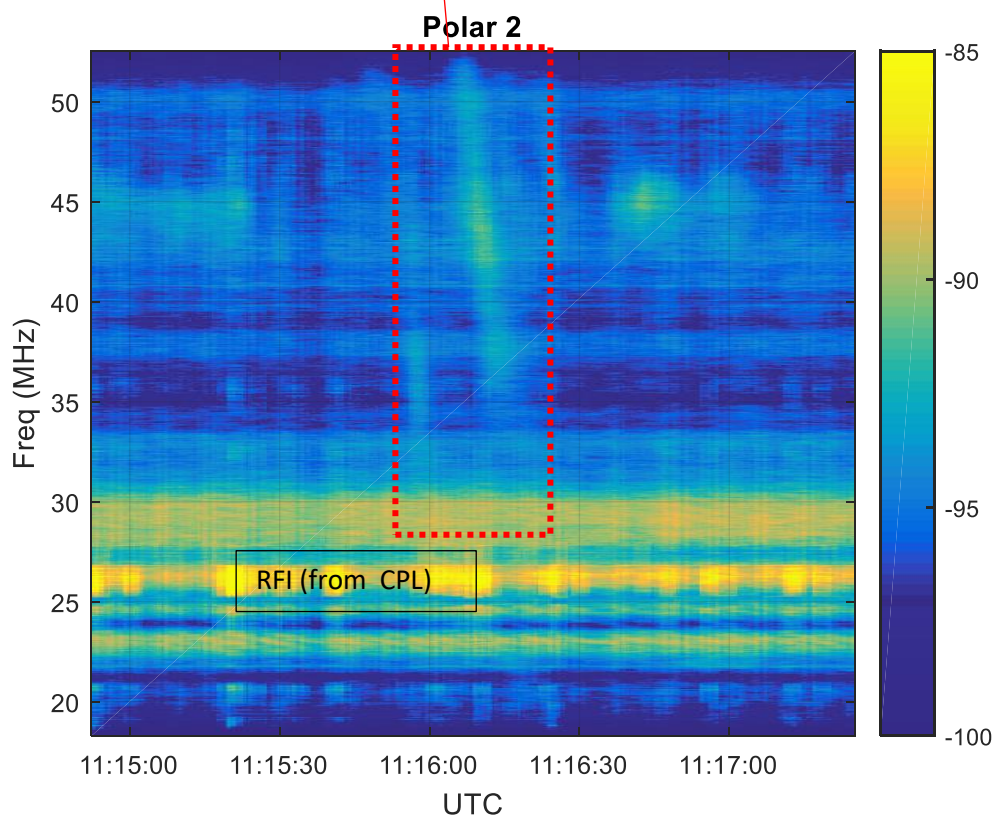


Events 4 – type III :

✓ Nancay

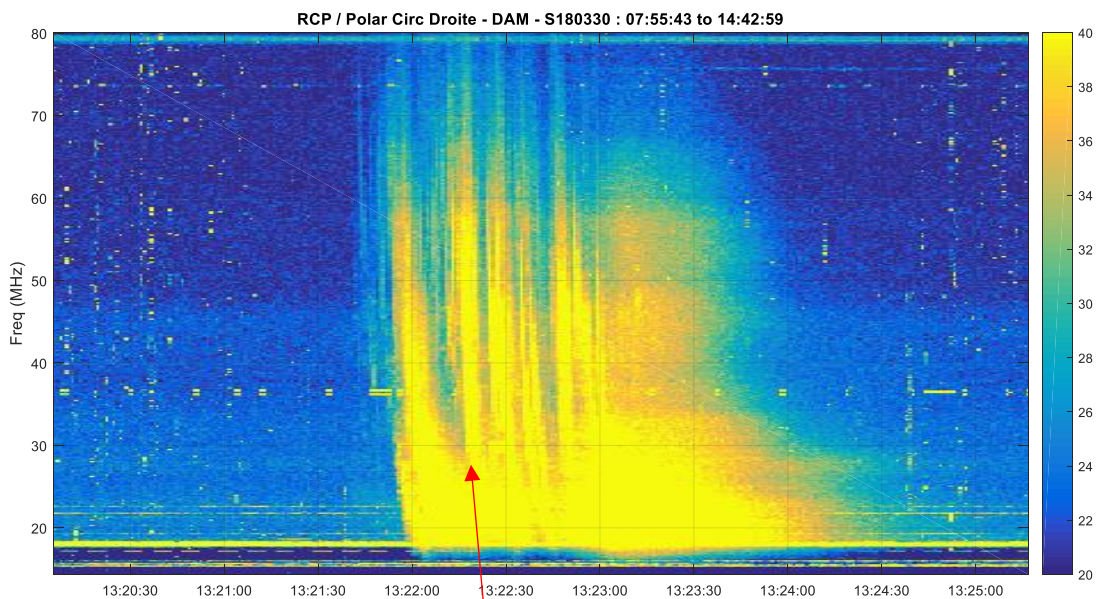


✓ LWA : Orsay

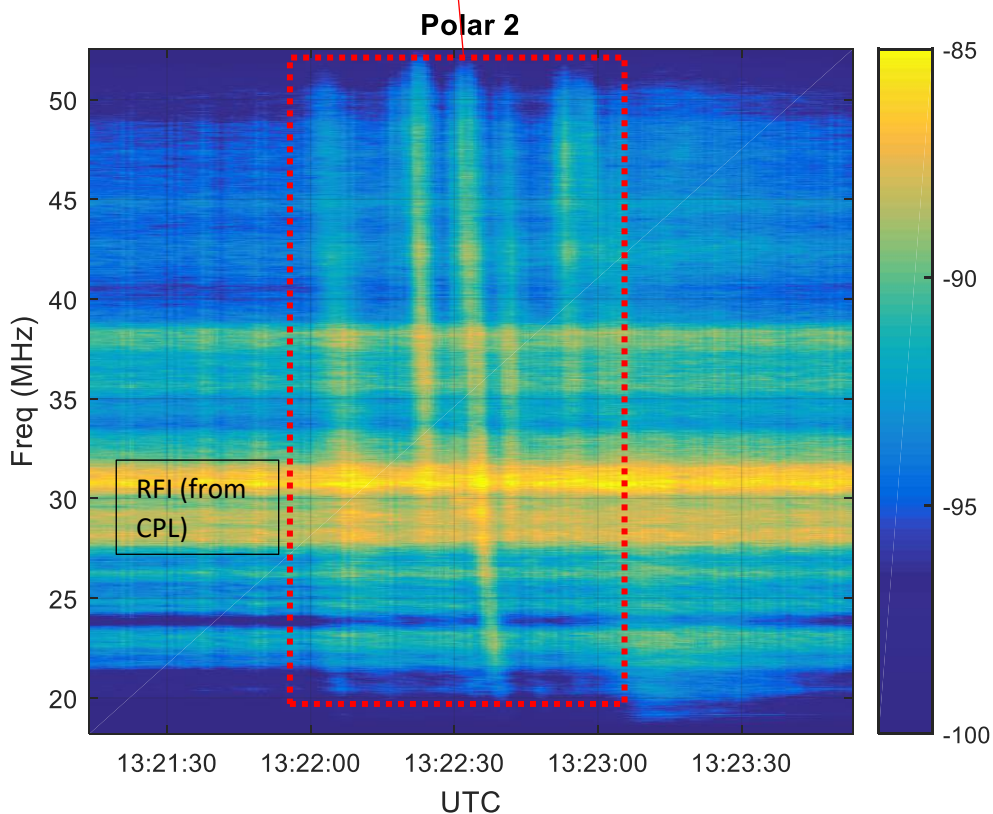


Events 5 – type III :

✓ Nancay



✓ LWA : Orsay



More information about the LWA Orsay Amateur Observatory :

The LWA antenna is a Nenufar design kindly offered by the Nancay observatory. Today, a lot of work is dedicated to fight against the RFI coming from CPL or similar links.

http://f1ehn.pagesperso-orange.fr/pages_radioastro/Images_Docs/Detection_Burst_solaire_Type_III_V_LWA.pdf